

Discriminant Features and Temporal Structure of Nonmanuals in American Sign Language

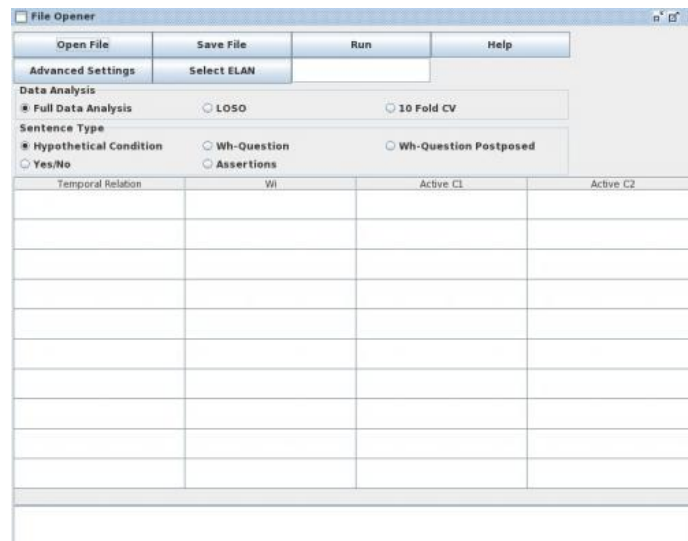
Tutorial on Temporal Analysis Software for Nonmanuals.

We have created a Java JAR executable that is compatible with java JRE 1.6. In

Windows: Double click in the file fslguibeta.jar.

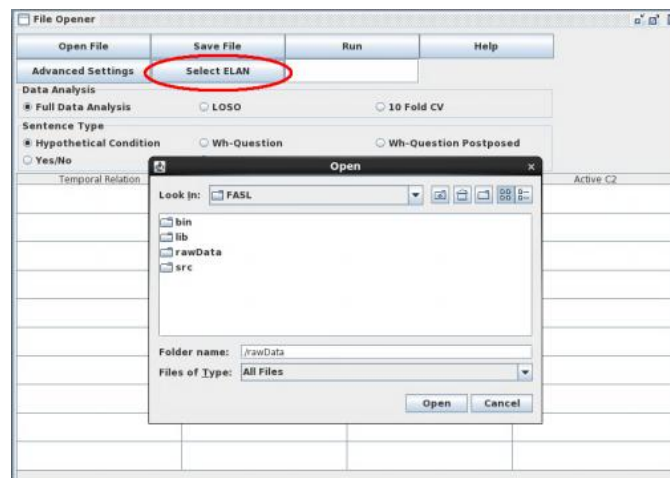
Linux: In the console type “java -jar fslguibeta.jar”

1. That will open the following interface:



2. Loading TDF exported ELAN files.

- a. Make sure that the ELAN annotations were save as a Tab Delimited File.
- b. Select the **FOLDER** with all the TDF to be analyze.



5. Press the button “Run” to execute the program.

Temporal Relation	Wii	Active C1	Active C2
{Brows move down} equals {Br...	1.0	89.42857142857143	23.234852278417627
{Brows move up} equals {Brow...	0.5810264335641274	10.571428571428571	70.55583375062594
{Mouth shape round} equals {...	0.511927904747384	82.85714285714286	46.670005007511264
{Mouth shape flat} starts {Bro...	0.43610182494720...	10.285714285714285	2.2033049574361545
{Mouth shape round} starts {H...	0.4336991195075011	11.714285714285715	1.1517275913870806
{Brows move down} finishes {M...	0.40279829431463...	0.0	2.9043565348022033
{Teeth touch Lip} before {Mout...	0.40224354669920...	0.0	7.511266900350526
{Mouth shape flat} during {Hea...	0.38928007239587...	6.2857142857142865	5.908863294942414
{Mouth shape round} before {B...	0.3874440679907243	0.0	1.9529293940911365
{Mouth closed} starts {Brows ...	0.35961900704157...	11.714285714285715	2.2033049574361545

6. Additional functionality: Save results and load results using the buttons on the interface.